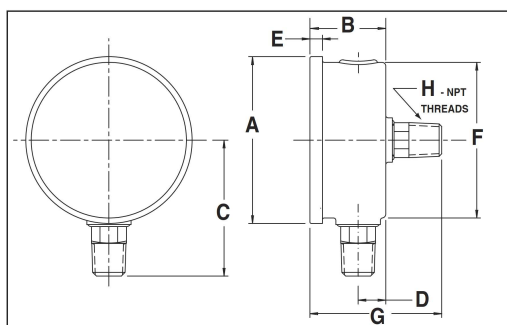


# Weksler, Pressure Gauge BY12 Series, BY14 Series

## CATALOG NUMBERS

Dial Size	63mm		100mm
Connection Location	Back	Bottom	Bottom
Connection NPT	1/4	1/4	1/4
Range (psi/bar/kPa)			
30"/0/ vac. and -1/0 bar (-100/0 kPa)	BY12YVC4CW	BY12YVC4LW	BY14YVC4LW
30"/0/30 psi and -1/0/2 bar (-100/0/200 kPa)	BY12YCB4CW	BY12YCB4LW	—
30"/0/60 psi and -1/0/4 bar (-100/0/400 kPa)	—	BY12YCC4LW	BY14YCC4LW
30"/0/150 psi and -1/0/10 bar (-100/0/1000 kPa)	BY12YCE4CW	BY12YCE4LW	—
0-15 psi and 0/1 bar (100 kPa)	BY12YPC4CW	BY12YPC4LW	—
0-30 psi and 0/2 bar (200 kPa)	BY12YPD4CW	BY12YPD4LW	BY14YPD4LW
0-60 psi and 0/4 bar (400 kPa)	BY12YPE4CW	BY12YPE4LW	BY14YPE4LW
0-100 psi and 0/7 bar (700 kPa)	BY12YPF4CW	BY12YPF4LW	BY14YPF4LW
0-160 psi and 0/11 bar (1100 kPa)	BY12YPG4CW	BY12YPG4LW	BY14YPG4LW
0-200 psi and 0/14 bar (1400 kPa)	BY12YPH4CW	BY12YPH4LW	—
0-300 psi and 0/21 bar (2100 kPa)	BY12YPJ4CW	BY12YPJ4LW	BY14YPJ4LW
0-600 psi and 0/42 bar (4200 kPa)	BY12YPM4CW	BY12YPM4LW	—
0-1000 psi and 0/70 bar (7000 kPa)	BY12YPP4CW	BY12YPP4LW	BY14YPP4LW
0-2000 psi and 0/140 bar (14,000 kPa)	BY12YPS4CW	BY12YPS4LW	—
0-3000 psi and 0/210 bar (21,000 kPa)	BY12YPT4CW	BY12YPT4LW	BY14YPT4LW
0-5000 psi and 0/350 bar (35,000 kPa)	BY12YPV4CW	BY12YPV4LW	—
0/10,000 psi and 0/700 bar (70,000 kPa)	BY12YPY4CW	BY12YPY4LW	—



## GAUGE DIMENSIONS

Lower Connection Gauge Size/Type			A	B	C	D-¼	E	F
63 mm	BY12Y	Inch	2.62	1.13	2.08	0.39	0.22	2.45
		mm	66	29	53	10	5	75
100 mm	BY14Y	Inch	4.29	1.42	3.14	0.46	0.29	3.88
		mm	109	36	80	12	7	98
Back Connection Gauge Size/Type			A	B	F	G	H	
63 mm	BY12Y	Inch	2.62	1.13	2.45	2.05	¼	
		mm	66	29	62	52		